

Project _____
 Item _____
 Quantity _____
 CSI Section 11400 _____
 Approval _____
 Date _____

Models

Delta HT-E-SEER-T

Tall/Freestanding Design



Standard Features

- Steam Elimination
- Energy Recovery System collects the hot water vapor inside the machine and uses it to preheat the incoming rinse water
- Operates on a single cold water connection
- Soft Start helps protect glassware from chipping and breaking
- 14" (355.6 mm) high stand allows for storage of chemicals under the machine
- Stainless steel rear dress panel
- Automatic fill
- Push button start
- Door interlock
- Pressure regulator
- Built-in booster heater with Sani-Sure™ final rinse system
- Automatic pumped drain for floor and wall drain installations
- Stainless steel wash pump
- Universal timer
- Digital LED control panel
- Delime cycle
- Simplified controls allow easy access for operation and service
- Built-in chemical pumps and priming switches

Mandatory Specs

Specify voltage _____

Options

- Water Hammer Arrestor
- Drain Water Tempering Kit
- Scale Prevention System (SPS)
- Replacement Cartridge for SPS

Accessories

- 36-Compartment Rack
 - 4-1/8" tall (105 mm)
 - 5-5/8" tall (143 mm)
 - 7" tall (178 mm)
- Combination Rack
- Peg Rack

NOTE: A vent hood is not recommended above the Jackson Delta HT-E-SEER as it does not produce excessive vapors. Always check with the local building code to know what type of ventilation is required for commercial dish machine or glasswasher installations in your area.

Specifications

High temperature undercounter dishwasher with steam elimination and energy recovery

Operates on a single cold water connection

Uses 0.65 gallons (2.47 liters) of water per rack

Uses 13.0 gallons (49.21 liters) of water per hour

Cleans 20 racks per hour

Cleans 720 glasses per hour

12" (305 mm) chamber clearance

Ergonomic 27.38" (696 mm) loading height

Three selectable cycles:
 Normal - 145 seconds
 Heavy - 213 seconds
 Extra-Heavy - 313 seconds

Powerful 1 hp wash pump motor

Air insulated between body and stainless steel housing

One (1) each peg and combination rack included

Durable stainless steel construction

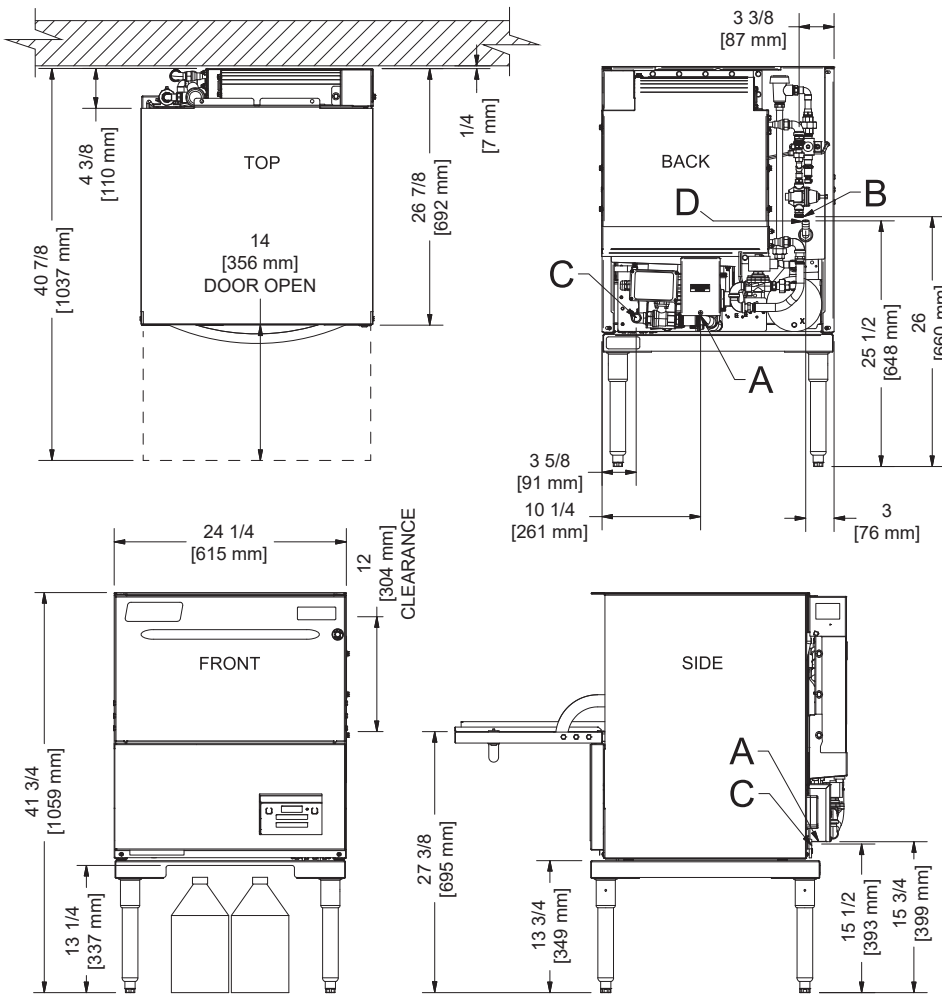


Intertek



Intertek





- LEGEND:**
 A - Electrical Connection
 B - Water Inlet (with 6' Hose)
 (3/4" Male GHT, connect to true 1/2" ID line, 40-90 °F)
 C - Drain Connection
 (1" ID, 1-3/8" OD)
 (Connect to MIN 1-1/2" Drain with Air-gap)
 D - Chemical Port

All dimensions from the floor can be increased 1" using the machine's adjustable feet.

All views shown without rear dress panel.

MODEL NO.	MACHINE DIMENSIONS				WALL CLEARANCE	SHIPPING INFORMATION					
	INSIDE CLEARANCE HEIGHT	INSIDE CLEARANCE WIDTH	INSIDE CLEARANCE DEPTH	DOOR OPEN DEPTH		WEIGHT	CLASS	CUBE	HEIGHT	WIDTH	DEPTH
Delta HT-E-SEER-T	12" (305 mm)	20" (508 mm)	20" (508 mm)	40.83" (1037 mm)	1/4" (6 mm)	302 lbs (137 kg)	85	23.58 cu. ft.	48.25" (1226 mm)	28" (712 mm)	28.5" (724 mm)

APPROXIMATE TOTAL AMP LOADS	
208/60/1	24.7
230/60/1	26.7

OPERATING CAPACITY	
Racks per Hour	20
Dishes per Hour	500
Glasses per Hour	720

WASH PUMP MOTOR	
Wash Pump	1 hp (208/230v)/ 3/4 hp (460v)

OPERATING CYCLE (seconds)	Wash	Rinse	Dwell	Vent	Total Cycle
Cycle I (Normal)	80	09	11	45	145
Cycle II (Heavy)	148	09	11	45	213
Cycle III (Extra Heavy)	248	09	11	45	313

WATER REQUIREMENTS	
Incoming Water Temperature	40-90° F (4.4-32.2° C)
Gallons per Rack	0.65 gal (2.47 L)
Gallons per Hour	13 gal (49.21 L)
Flow Pressure (PSI)	10
Waterline Size (NPT)	3/4" Male GHT (connect to true 1/2" ID Line)
Drainline Size (OD)	1-3/8"

OPERATING TEMPERATURES	
Wash	155° F (68.3° C)
Rinse	180° F (82.2° C)

HOW TO SPECIFY: Delta HT-E-SEER-T

Jackson WWS, Inc.
 Shipping Address: 6209 North U.S. Highway 25E, Gray, KY 40734
 Mailing Address: P.O. Box 1060, Barbourville, KY 40906
 Telephone: 888-800-5672 • Fax: 606-523-1799
 Email: info@jacksonwws.com
 07610-004-54-97 [06/27/19]

www.jacksonwws.com