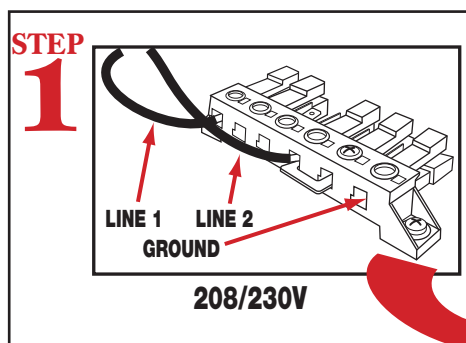
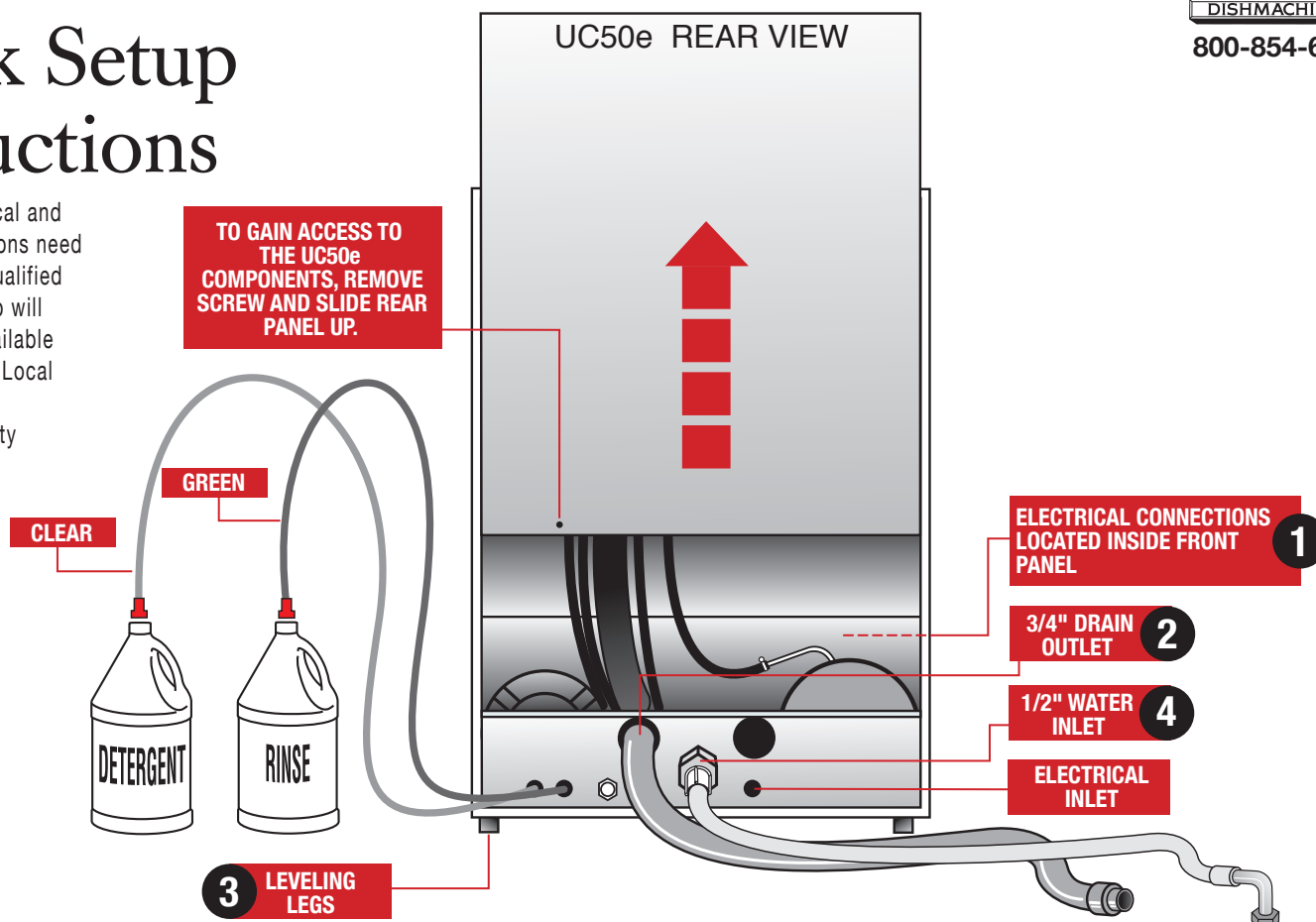


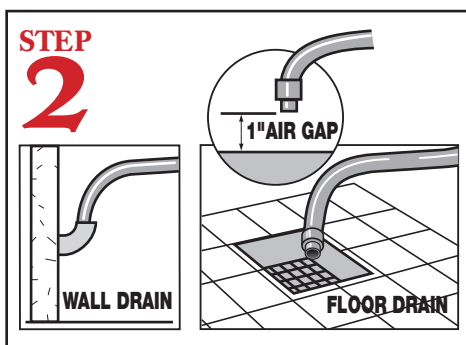
# UC50e

## Quick Setup Instructions

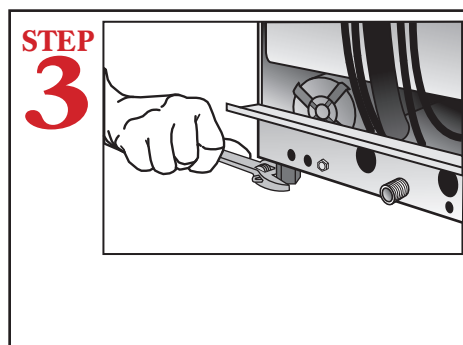
**WARNING:** Electrical and plumbing connections need to be made by a qualified service person who will comply with all available Federal, State and Local Health, Electrical, Plumbing and Safety codes.



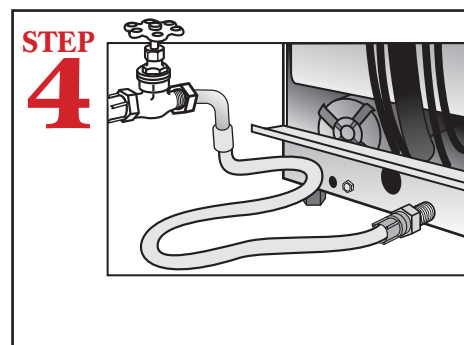
Connect lines 1 and 2 to electrical block located inside front panel.



Connect the drain hose to wall or floor drain. The floor drain must have a 1 inch air gap between drain hose and floor drain.



Level dishmachine by adjusting leveling legs. Dishmachine must be level front and back to ensure proper performance.



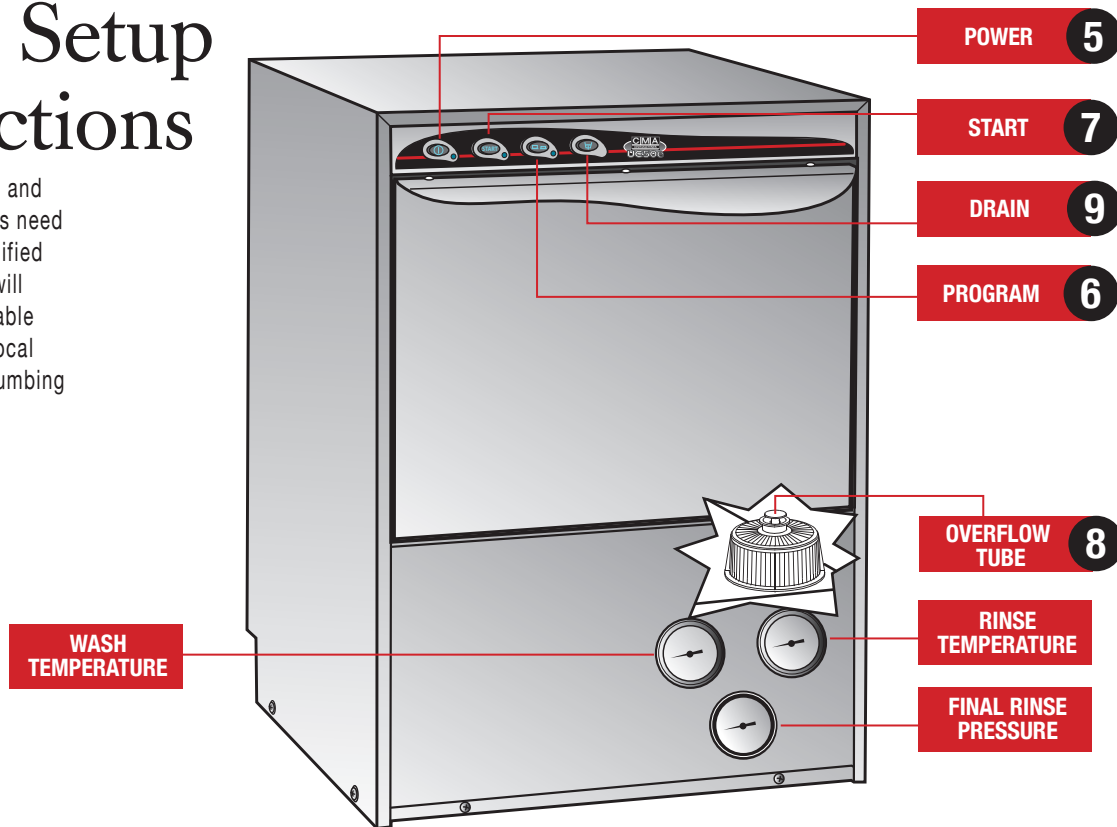
Connect dishmachine to hot water source, minimum temperature 120F, better results at 140F.

# UC50e

## Quick Setup Instructions

**WARNING:** Electrical and plumbing connections need to be made by a qualified service person who will comply with all available Federal, State and Local Health, Electrical, Plumbing and Safety codes.

UC50e FRONT VIEW



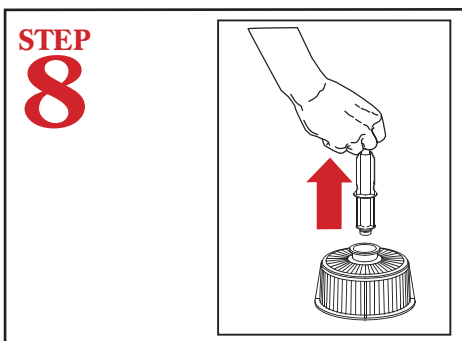
Push the power button to turn on the dishwasher. Wash tank will fill automatically.



Push button to change time cycle. Push to the "IN" position to run for 120 seconds and the "OUT" position for 180 second run.



Push the "START" button to activate the dishwasher.



Push the power button (STEP 5) to turn power off. When draining the dishwasher, remove overflow tube located inside the wash tank.



With the overflow tube removed, push drain button to empty dishwasher. Reinstall overflow tube when drain cycle is complete.